

## Signals Digital Lab Exchange DLX™

### Finally. A lab that thinks as fast as you do.

Revvity Signals has partnered with Scitara® to create the Signals Digital Lab Exchange (DLX)™—the first integration Platform-as-a-Service (iPaaS) specifically built for scientific settings. Powered by Scitara, Signals DLX establishes seamless, bidirectional connectivity across instruments, LIMS, ELNs, and other critical lab systems that previously existed in isolation.

By effortlessly bridging these islands of data and functionality, Signals DLX breaks down longstanding barriers that have hindered innovation. Scientists are freed from integration challenges, allowing them to focus on what matters most. With a flexible integration fabric enabling multifaceted data flows, Signals DLX marks a new chapter for streamlining workflows and enhancing collaboration across modern laboratory environments.

## Signals Digital Lab Exchange DLX

### Connect

Seamlessly integrate legacy systems with new technologies within a common digital infrastructure.

- Connection technologies that support every instrument, application and service
- Flexible, vendor-agnostic configuration tools that support hundreds of instruments and applications

- Integration capabilities through the Signals platform that make it easy to quickly add new devices and applications
- QR code technology that scans simple devices and samples on the DLX platform

### Orchestrate

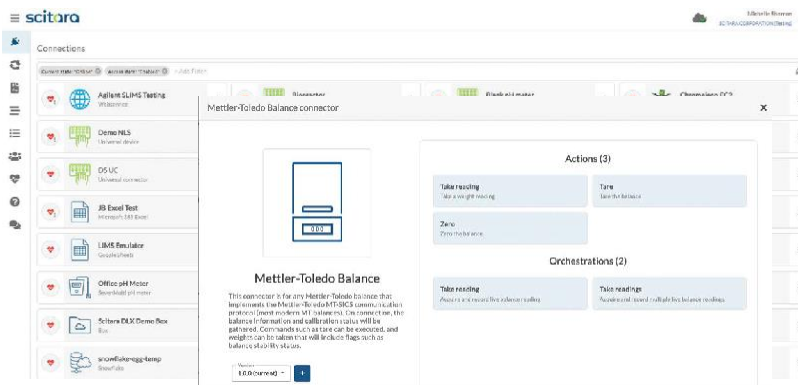
Automate tasks, enable intelligent user notifications and exchange data securely across the entire platform.

- An auditable digital custody chain that eliminates manual transcription, improve compliance and ensures data integrity
- User and group notifications with data review, confirmation and signoff steps
- A powerful parsing engine that identifies and structures key data
- Access to data in flight, enabling you to re-shape or perform calculations as needed

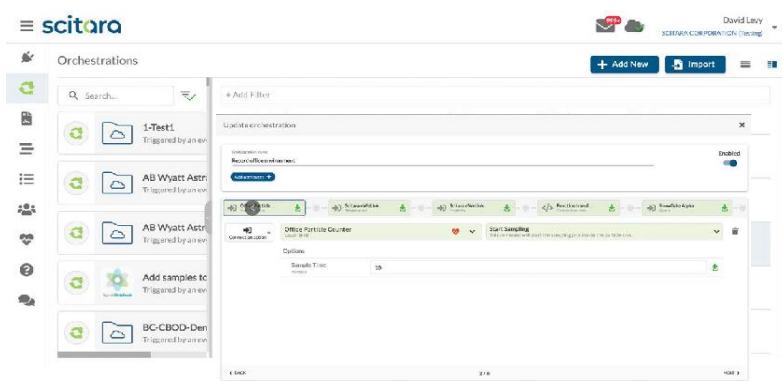
### Monitor

Capture and reconstruct data at any time to gather insight into lab operations and accelerate decision-making.

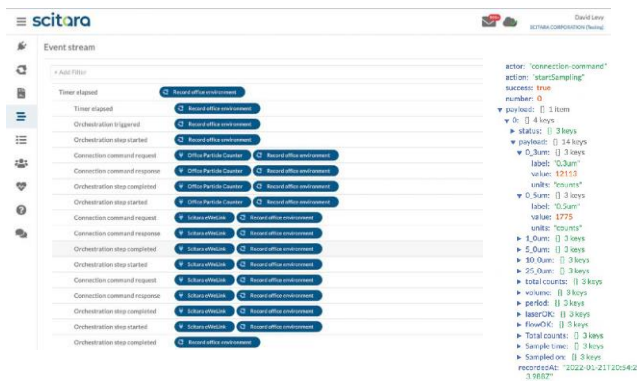
- Real-time visualization of digital transactional activities
- Event streams and audit trails that document complete transaction histories
- Instrument and connection status updates that improve monitoring
- Orchestration dashboard that enables you to track progress and avoid bottlenecks
- Compliance for data in-flight



**Connect**  
 Signals DLX includes multiple connection technologies that support both legacy and modern systems, providing for an open data exchange across the entire platform.



**Orchestrate**  
 Signals DLX orchestration engine provides an intuitive interface that enables you to automate simple tasks, while more advanced tools and on-board JavaScript capabilities allow for more sophisticated workflow automation.



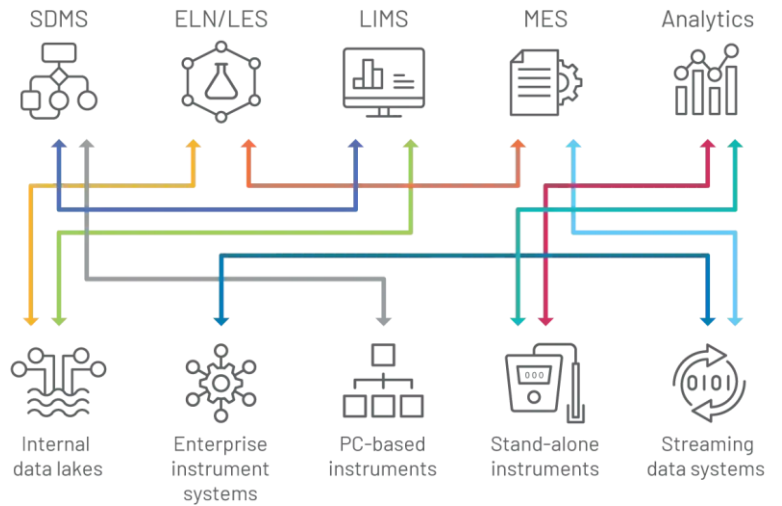
**Monitor**  
 Signals DLX Event stream captures all transactional data flowing through the system—including information regarding function transformations, calculations and reformatting—ensuring data integrity and compliance.

## Universal connectivity and the end of point-to-point tech

### YESTERDAY'S LAB

In yesterday's labs, vendor-specific, point-to-point technologies have created significant delays in scientific advancement.

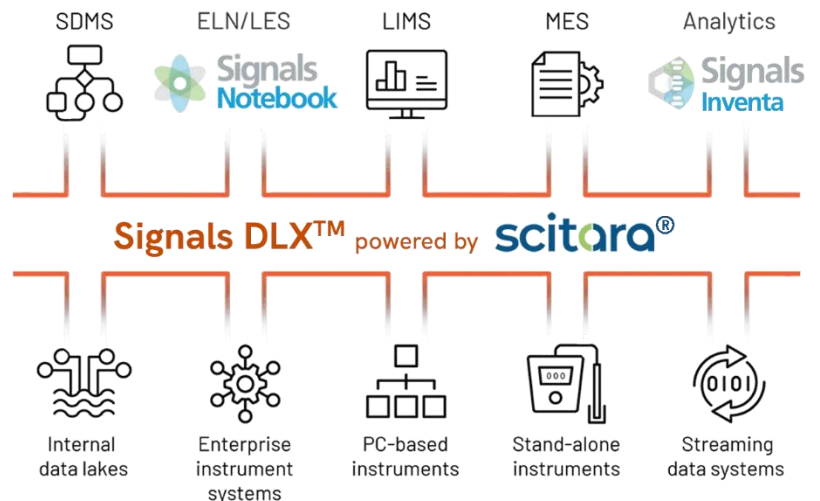
Typically, it takes a top-tier pharmaceutical company 5-7 years to deploy across a network of manufacturing and quality sites. By then, the software is already obsolete.



### YOUR LAB WITH SIGNALS DLX

Signals DLX engine decouples transactional data from your organization's business management system, creating a flexible platform in which integrations,

APIs and automation can be deployed on-demand as needs arise and change. Signals DLX integrates natively with Signals Notebook further enhancing the user experience by centralizing experimental data, analysis, and collaboration. Signals DLX and Signals Notebook provide an unmatched digital ecosystem for modern science and research. The result? True universal connectivity.





### Meet the Modern Lab

Signals DLX powered by Scitara, makes it possible to create a fully connected, fully compliant lab infrastructure, enabling you to complete your lab's digital transformation and unlock true data mobility within your Signals Notebook.


---

Visit us at [Signals DLX powered by Scitara.](#)


---




[revvitysignals.com](https://revvitysignals.com)  
77 4th Avenue  
Waltham, MA 02451 USA  
P: (800) 762-4000 (+1) 203-925-4602

 Revvity Signals

 RevvitySignalsSoftware

 revvitysignals

 Revvity\_Signals

 RevvitySignals